



# garden

curated by  
Lidewij Edelkoort



GARDEN  
curated by Lidewij Edelkoort  
designed by Sergio Machado  
for El Espartano  
coordinated by Lili Tedde  
Photos by Francisco Nocito

top: Field of Energy, 1,2 x 1,5 mt  
cover: Tree of Joy, 2,0 x 3,0 mt

## GARDEN

The vision of a garden came immediately to mind. It seems evident that mental repair is needed, and that design should have a healing component. The deeper we sink into inexcusable inhuman practices and continual wars, the higher we must reach to surmount the feeling of despair about the destiny of mankind. Rekindling the connection to animism guides us in a search for radical beauty as a manifest for survival.

Beauty as the sole saviour.

In the garden, one can project a protective moment of happiness by following the sinuous fluidity of leaves, contemplating the blooming of corollas, surprising the unfolding majesty of a flower. With thought processes buzzing like bees around the secret life of flowers, pollinizing creative energies along the way.

As nature is part of culture, reinforcing us since the beginning of creative expression, we decided to create a perpetual childish garden inspired by outsider art, with the naïveté of wildly drawn blooms, cut out leaves, collaged botanicals and a flowerbed daybed. Works of visual hope from the contemporary inner garden.

Lidewij Edelkoort  
Milan, April 2024



Twin Flowers, 1,55 x 2,1 mt





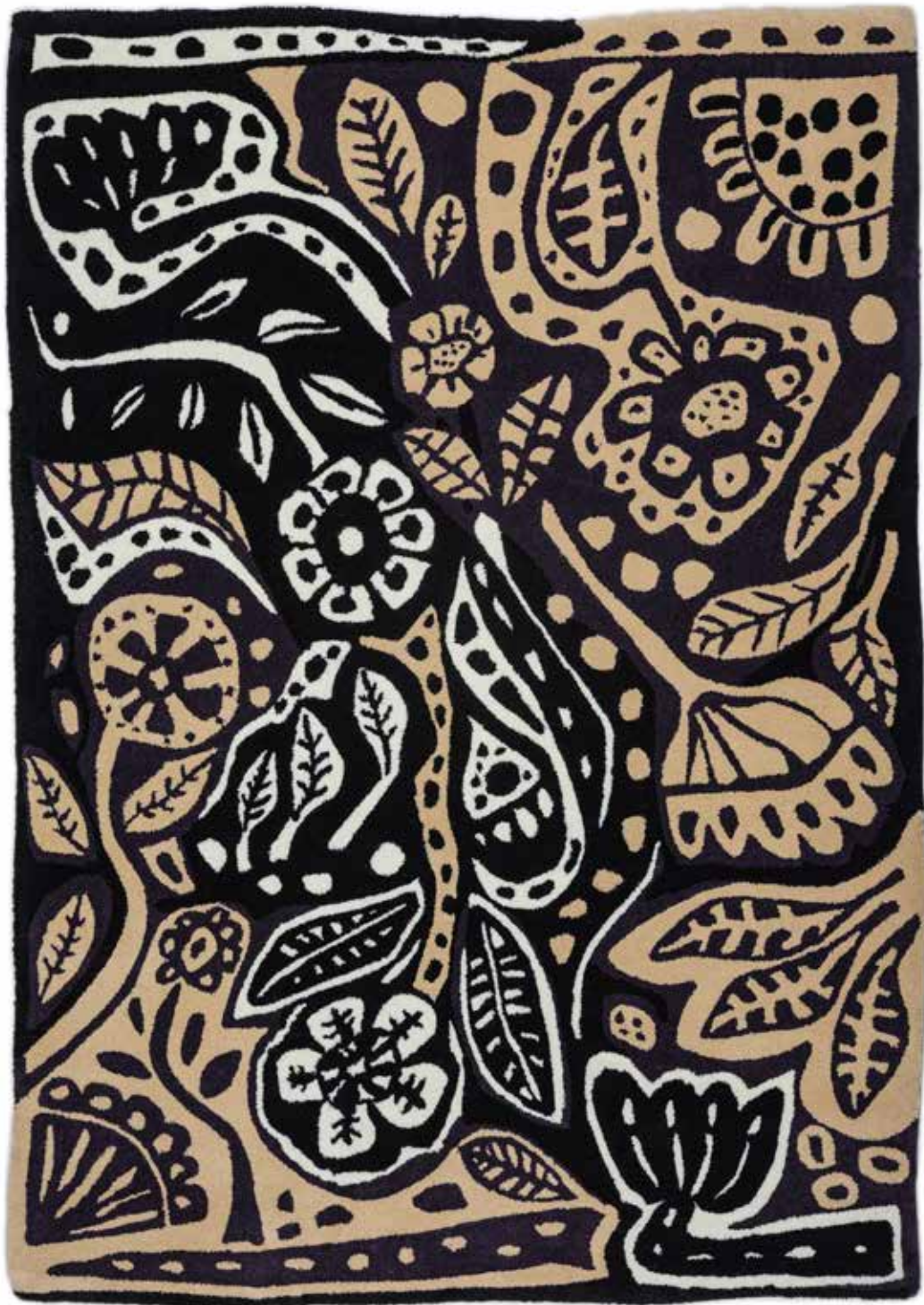
Inner Garden, 2,5 x 3,5 mt





top: Bloom Room, 1,55 x 2,1 mt  
right: Secret Life, 1,85 x 2,6 mt





left: Forest Floor, 1,55 x 2,1 mt  
top: Botanical Abstraction, 1,85 x 2,6 mt



# El Espartano

The 80-year-old but very young company El Espartano is run by two dynamic siblings, Damián and Nuria Kehayoglu. This brother and sister team manage their vibrant rug mill in Buenos Aires. Whereas he oversees communication with clients, she is the mastermind behind the creative process. Together, they discuss future endeavours and challenges, such as presenting in Milan for the first time. They fully master the company, founded by their Greek family with its deep roots in the craft of rug making, inheriting an immense sense of quality and innovation. Carpets therefore seem to be part of their mental make-up.

Having historically focused on residential carpets, in recent decades El Espartano entered the contract market, collaborating with local designers in the public and hospitality sector, producing innovative colourful designs. With a focus on natural fibres, especially locally sourced wool, the complete manufacturing cycle is run in house, from spinning and dyeing to weaving and backing. The design and the manufacturing teams develop different yarn counts in order to landscape interiors with irregular surfaces that render each design organic. The vertical integration at their 30,000 square meter state-of-the-art factory enables them to maintain stable high-quality standards while optimizing designed-to-finished production time.

By embracing this interdisciplinary perspective where art, design and textiles meet, El Espartano has become the market leaders, for example, through its Design Lab which partners with well-known artists and designers on a wide range of projects. Products that reflect the vision of each creative are made in collaboration, sparking dialogues that breathe life into various ideas that push the boundaries of conventional design.

These two gifted children continue to infuse their daily work with meaning as they weave our interior universe.

Lidewij Edelkoort  
Milan, April 2024



Flower Bed, 1,55 x 2,1 mt



Tulip Dance, 1,00 mt diameter



**el espartano**

[www.elespartano.com](http://www.elespartano.com)

[@elespartano.ar](https://www.instagram.com/elespartano.ar)

ROSSANA ORLANDI

Via Matteo Bandello, 16, 20123 . Milan, Italy  
opening hours are 9:30 am / 8:00 pm  
wednesday the gallery will close at 5:30 pm